

For more information on  
scheduled dates,  
please contact the  
Michigan Department of  
Community Health at:  
517-335-8165



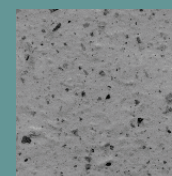
# Contact Investigations for Tuberculosis

A Workshop for Public Health  
Workers



Michigan Dept of Comm Health  
Capitol View Building  
201 Townsend Street  
Lansing, MI 48913

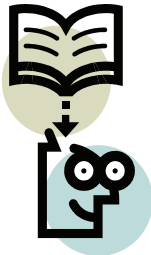
American Lung Association of Michigan  
403 Seymour  
Lansing, MI 48933



## Workshop Description

This day long workshop is recommended for public health personnel to strengthen their skills in conducting contact investigations. Participants should be actively involved in a local tuberculosis (TB) control program.

This course is offered throughout the year at a variety of locations. There is no cost for this training. It is provided by the Michigan Department of Community Health, the American Lung Association of Michigan and the Office of Public Health Practice at the University of Michigan School of Public Health.



### Contact Hours for Nurses

This educational activity has been approved for 6.0 contact hours. Contact hours are provided by the Office of Public Health Practice at the University of Michigan School of Public Health. The Office of Public Health Practice at the University of Michigan School of Public Health is an approved provider of continuing nursing education by the Michigan Nurses Association, an accredited approver by the American Nurses Credentialing Center's Commission on Accreditation.

Upon completion of this course, the participant will be able to:

Describe the fundamentals of tuberculosis

Define contact investigation (CI)

Describe the importance of the CI for preventing transmission

Describe when a CI should be conducted

Describe how a TB control program should be prioritized

Describe the implementation of a CI

Identify common barriers to the CI

### Agenda

Registration

Welcome and Pretest

Overview of Tuberculosis

Break

Contact Investigations Part I

Scenarios/Discussion

Lunch

Contact Investigations Part II

Break

Scenarios/Discussion

Evaluation and Posttest

American Lung Association of  
Michigan  
403 Seymour  
Lansing, MI 48933

Michigan Dept of Comm Health  
Capitol View Building  
201 Townsend Street  
Lansing, MI 48913